

Regional Hospital, Bristol.

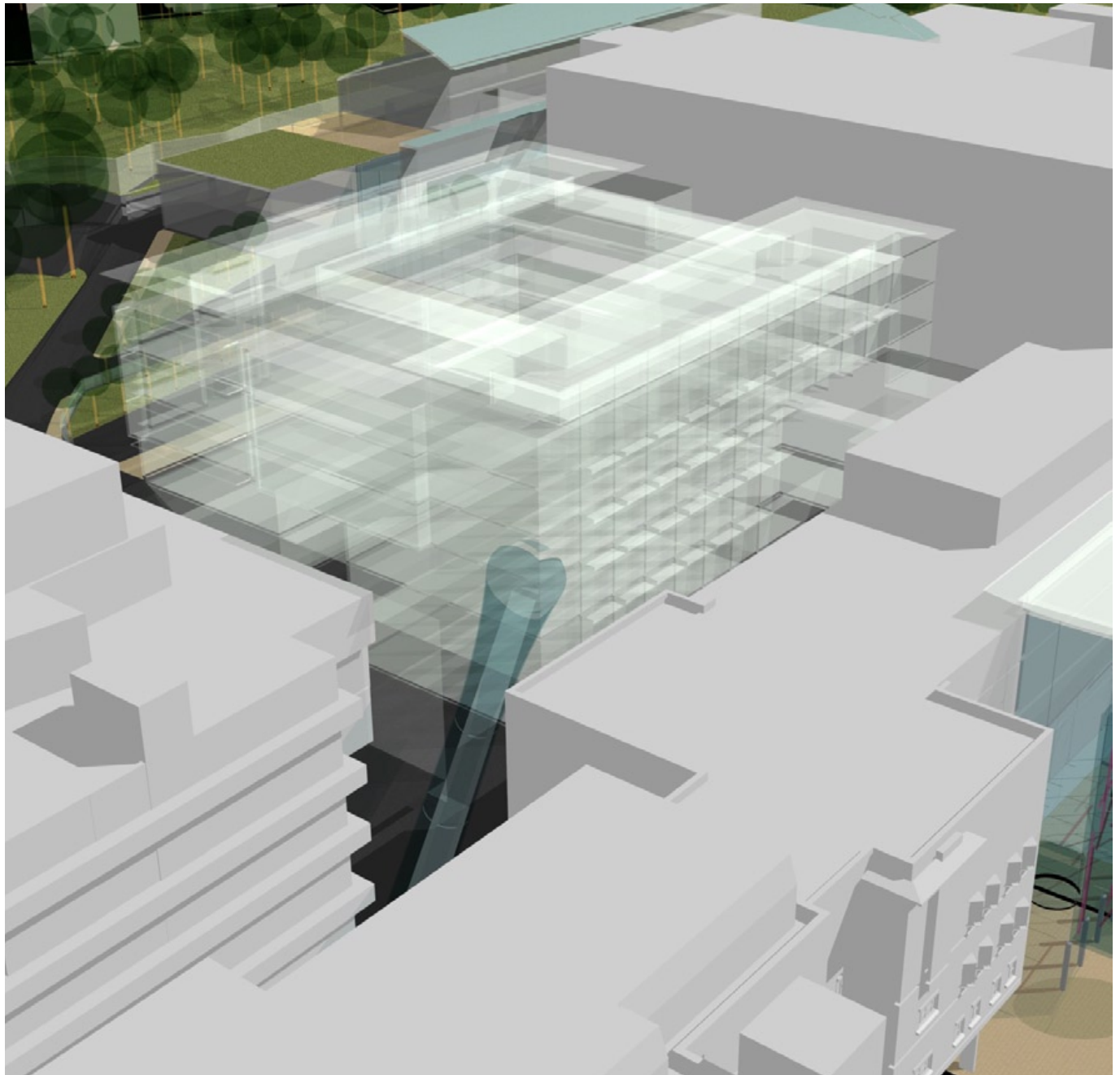
As part of a strategic review of all healthcare in the Bristol and Avon communities Bristol Health Service Commission asked us to prepare a series of options for comparison and evaluation.

The Bristol Royal Infirmaries part in this review was to establish whether the full complement of health provisions for the Avon area could be contained on this 23 area site. This required a new centre of 2000 beds based on an institute model.

In addition to the masterplan, a supplementary planning guidance framework was required establishing development guidelines for all future development on the BRI site.

The proposals were reviewed and presented to the City council and was seen as making a significant contribution to the City's Urban Renaissance.

Client: Avon Strategic Health Authority
Project value: £450m



Regional Hospital, Bristol.

