

Explore @ Bristol Science Centre.

The new Science Learning Centre South West is a partnership between At-Bristol, the University of Bristol and the University of Plymouth and provides courses across the region. It is part of a national network of Science Learning Centres, a joint initiative between the Department of Education and Skills and the Wellcome Trust.

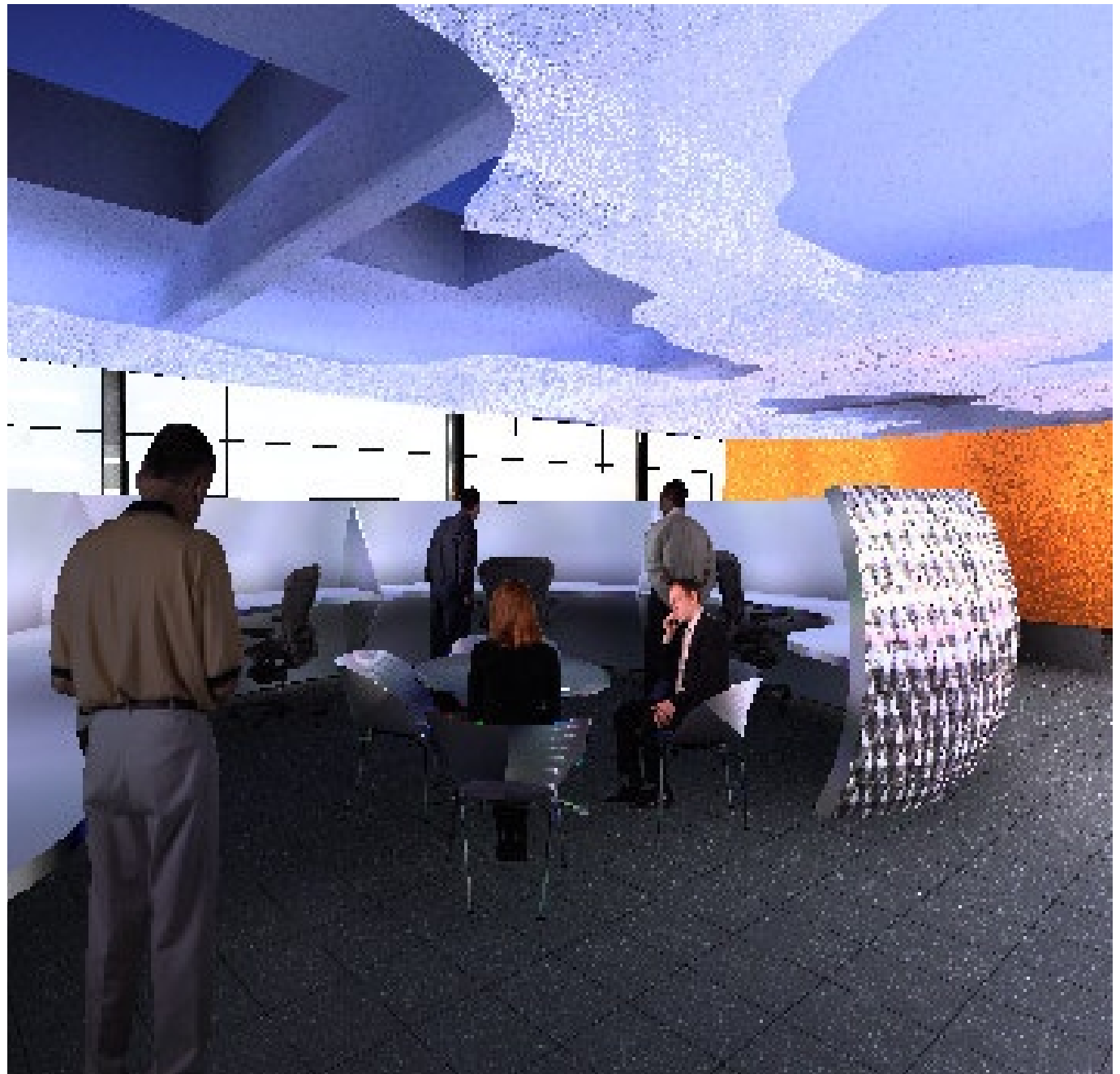
CODA Architects were asked to prepare a feasibility study and concept designs for the new learning suite based in At-Bristol, with a teacher 'drop in' centre, state of the art laboratory and ICT facilities.

New laboratories for cutting edge science courses for teachers, teaching assistants and technicians from Foundation to post-16 were required in an environment that made the learning experience a hands-on one in keeping with the Explore hands on concept.

Backlit walls with automatically opening doors were created to identify the prime spaces and curved shell like areas were created in the space between for the reception and breakout rooms.

Client: Explore@Bristol

Project value: £3.0m



Explore @ Bristol Science Centre.

